

1. İzmir İl İktisat ve Ticaret Müdürlüğüne bağlı olarak faaliyet gösteren işletmelerin listesi aşağıya sunulmuştur.

2. İzmir İl İktisat ve Ticaret Müdürlüğüne bağlı olarak faaliyet gösteren işletmelerin listesi aşağıya sunulmuştur.

3. İzmir İl İktisat ve Ticaret Müdürlüğüne bağlı olarak faaliyet gösteren işletmelerin listesi aşağıya sunulmuştur.

4. İzmir İl İktisat ve Ticaret Müdürlüğüne bağlı olarak faaliyet gösteren işletmelerin listesi aşağıya sunulmuştur.

5. İzmir İl İktisat ve Ticaret Müdürlüğüne bağlı olarak faaliyet gösteren işletmelerin listesi aşağıya sunulmuştur.

6. İzmir İl İktisat ve Ticaret Müdürlüğüne bağlı olarak faaliyet gösteren işletmelerin listesi aşağıya sunulmuştur.

7. İzmir İl İktisat ve Ticaret Müdürlüğüne bağlı olarak faaliyet gösteren işletmelerin listesi aşağıya sunulmuştur.

8. İzmir İl İktisat ve Ticaret Müdürlüğüne bağlı olarak faaliyet gösteren işletmelerin listesi aşağıya sunulmuştur.

9. İzmir İl İktisat ve Ticaret Müdürlüğüne bağlı olarak faaliyet gösteren işletmelerin listesi aşağıya sunulmuştur.

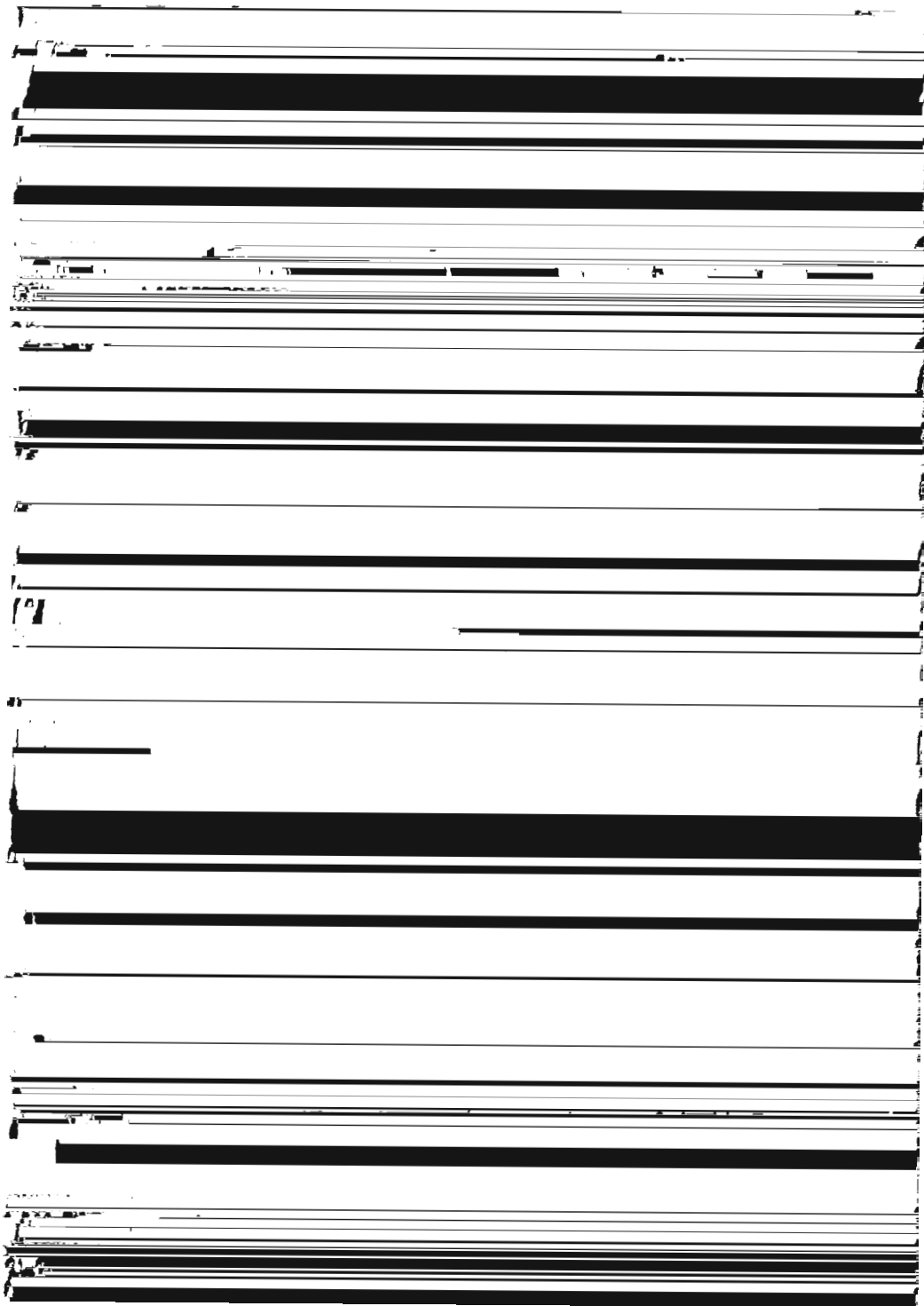
10. İzmir İl İktisat ve Ticaret Müdürlüğüne bağlı olarak faaliyet gösteren işletmelerin listesi aşağıya sunulmuştur.

11. İzmir İl İktisat ve Ticaret Müdürlüğüne bağlı olarak faaliyet gösteren işletmelerin listesi aşağıya sunulmuştur.

12. İzmir İl İktisat ve Ticaret Müdürlüğüne bağlı olarak faaliyet gösteren işletmelerin listesi aşağıya sunulmuştur.

13. İzmir İl İktisat ve Ticaret Müdürlüğüne bağlı olarak faaliyet gösteren işletmelerin listesi aşağıya sunulmuştur.

14. İzmir İl İktisat ve Ticaret Müdürlüğüne bağlı olarak faaliyet gösteren işletmelerin listesi aşağıya sunulmuştur.



[REDACTED]

[REDACTED]

hoşlanır.

[REDACTED]

[REDACTED]

111 26 4 00 0.000 00

1. *Journal of the American Medical Association*, 2000; 283: 2686-2692.

[REDACTED]

11. *Journal of the American Medical Association*, 273:1221-1222, 1995

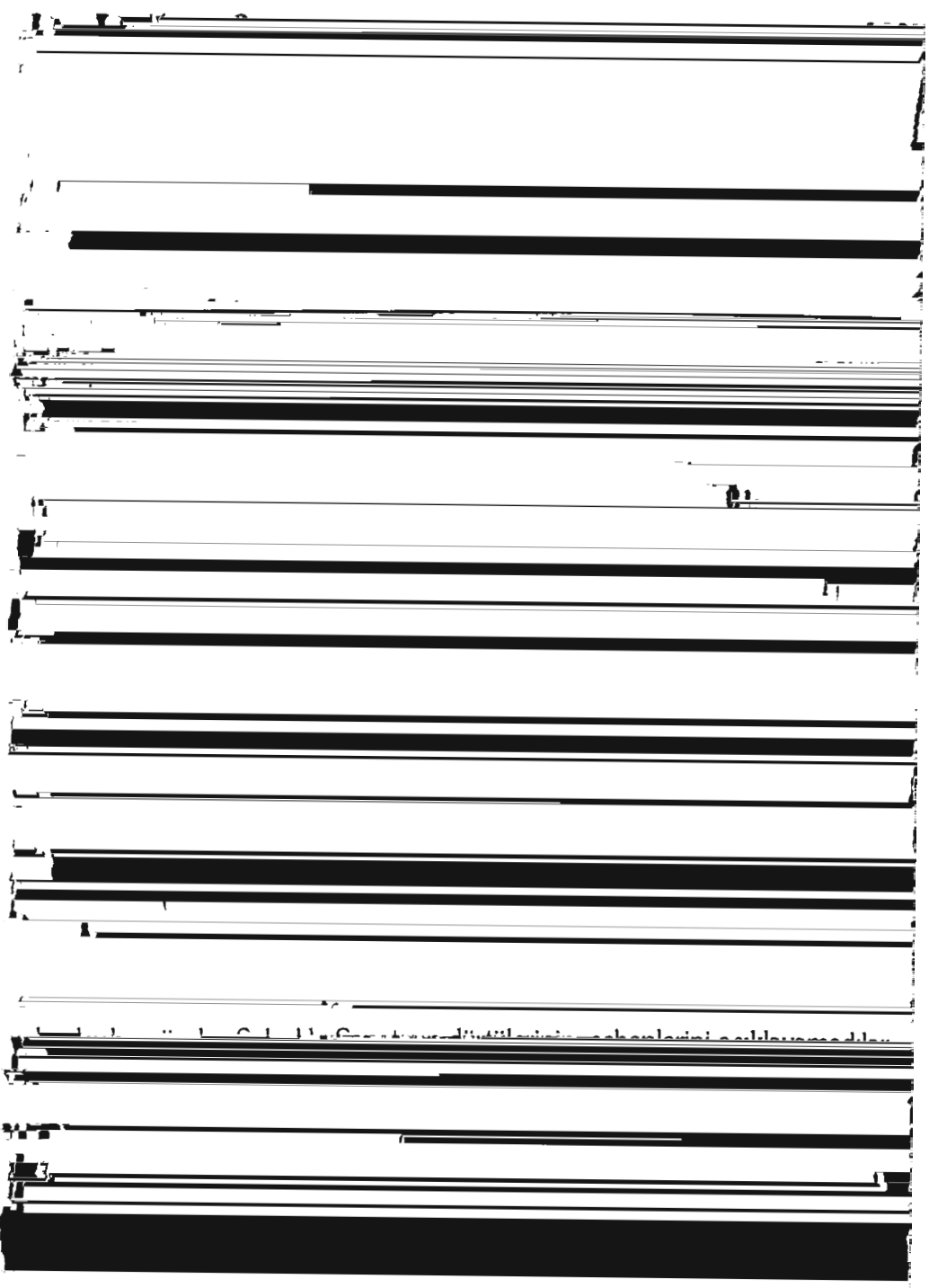
7. W W W

2. $\lim_{x \rightarrow 0} \frac{1}{x} = \infty$

Figure 1. A horizontal bar chart showing the percentage of respondents for each age group. The x-axis is labeled 'Percentage' and ranges from 0 to 100. The y-axis lists age groups: 18-24, 25-34, 35-44, 45-54, 55-64, 65-74, 75-84, and 85+. The bars show a decreasing trend with age, starting at approximately 28% for the 18-24 group and ending at approximately 2% for the 85+ group.

1. *Chlorophyll a* and *Chlorophyll b* were determined by the method of Lichtenthaler and Whistler (1973). The total protein concentration was determined by the method of Lowry (1956).

odalar vardı. (33)



... ..

... ..

... ..

... ..

... ..

... ..

... ..

... ..

... ..

... ..

... ..

... ..

... ..

... ..

... ..

... ..

... ..

... ..

... ..

Figure 6

(A) Schematic diagram of the experimental setup for the study of the effect of the initial concentration of the polymer solution on the morphology of the electrospun fibers.

(B) SEM micrographs of the electrospun fibers at different initial concentrations of the polymer solution. The scale bar is 10 μm.

(C) Photographs of the electrospun fibers at different initial concentrations of the polymer solution.

(D) Photographs of the electrospun fibers at different initial concentrations of the polymer solution.

(E) Photographs of the electrospun fibers at different initial concentrations of the polymer solution.

(F) Photographs of the electrospun fibers at different initial concentrations of the polymer solution.

(G) Photographs of the electrospun fibers at different initial concentrations of the polymer solution.

(H) Photographs of the electrospun fibers at different initial concentrations of the polymer solution.

(I) Photographs of the electrospun fibers at different initial concentrations of the polymer solution.

(J) Photographs of the electrospun fibers at different initial concentrations of the polymer solution.

(K) Photographs of the electrospun fibers at different initial concentrations of the polymer solution.

(L) Photographs of the electrospun fibers at different initial concentrations of the polymer solution.

(M) Photographs of the electrospun fibers at different initial concentrations of the polymer solution.

(N) Photographs of the electrospun fibers at different initial concentrations of the polymer solution.

(O) Photographs of the electrospun fibers at different initial concentrations of the polymer solution.

(P) Photographs of the electrospun fibers at different initial concentrations of the polymer solution.

(Q) Photographs of the electrospun fibers at different initial concentrations of the polymer solution.

(R) Photographs of the electrospun fibers at different initial concentrations of the polymer solution.

(S) Photographs of the electrospun fibers at different initial concentrations of the polymer solution.

(T) Photographs of the electrospun fibers at different initial concentrations of the polymer solution.

(U) Photographs of the electrospun fibers at different initial concentrations of the polymer solution.

(V) Photographs of the electrospun fibers at different initial concentrations of the polymer solution.

(W) Photographs of the electrospun fibers at different initial concentrations of the polymer solution.

(X) Photographs of the electrospun fibers at different initial concentrations of the polymer solution.

(Y) Photographs of the electrospun fibers at different initial concentrations of the polymer solution.

(Z) Photographs of the electrospun fibers at different initial concentrations of the polymer solution.

Mr. Q: nasıl olduyseniz de bu işi bu kadar uğursuzca bitirdiniz?

[REDACTED]

[REDACTED]

[REDACTED]

[REDACTED]

[REDACTED]

[REDACTED]

[REDACTED]

[REDACTED]

[REDACTED]

[REDACTED]

[REDACTED]

[REDACTED]

[REDACTED]

[REDACTED]

[REDACTED]

[REDACTED] to the Bureau - 650

[REDACTED]

[REDACTED]

[REDACTED]

[REDACTED]

66- Blochet_Musulman Painting s. 21.

